



SWASHER[®]
Ultra Low-lint Surgical Towels

The SWASHER Ultra Low-Lint Surgical Towel

The SWASHER is a sterile, biocompatible surgical towel designed to reduce lint and particulate contamination in interventional and surgical procedures.



SYNTERVENTION

SWASHER® Ultra Low-Lint Surgical Towels

The ultra low lint and low particulate characteristics of SWASHER towels minimizes the transfer of foreign bodies into the patient. Data confirms that foreign body contamination is associated with complications and risks that increase the liability and costs to the hospital.*



Economical

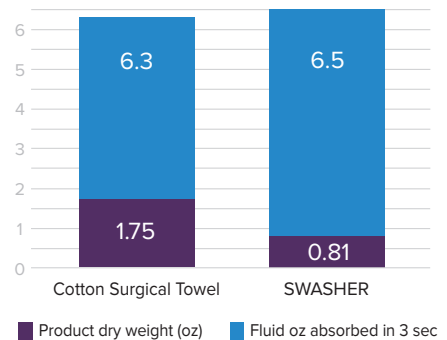
- Weighs less to save on shipping and medical waste disposal costs.
- Durable and more absorbent for extended use.
- Use our calculators to estimate how much your facility could save. Visit syntervention.com/calculators.

Better Absorbency

- Excellent fluid capacity with SWASHER.
- See the SWASHER in action at syntervention.com/video-library.



SWASHER Weighs Less and Absorbs More

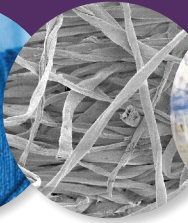


*See full literature review at www.syntervention.com/references.

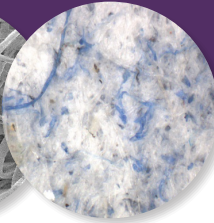
SWASHER Versus Cotton Towel



Cotton Towel



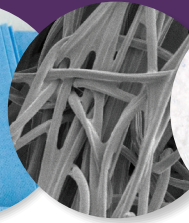
SEM 250x



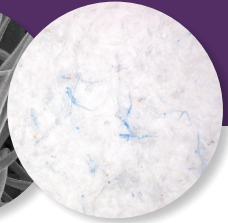
Wet Filtrate
Method 50x



SWASHER



SEM 250x



Wet Filtrate
Method 50x

SWASHER has 89% Less Lint than Standard Cotton Surgical Towels*

Product	10 μm	25 μm	50 μm	100 μm
Cotton Towel	333,740	23,200	11,400	5,000
SWASHER	38,600	730	130	0

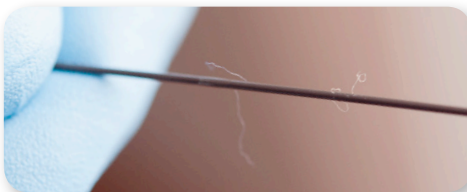
*Independent LPC testing. Data on file at Syntervention, Inc.



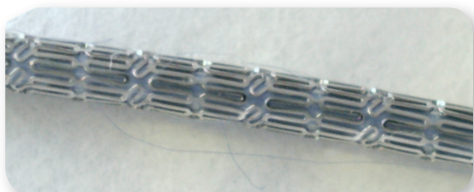
Simple lint roller test performed on cotton towel.



Simple lint roller test performed on SWASHER.



Cotton towel fibers found on guide wire.



Cotton towel fibers trapped on stent strut.

Instructions for Use:

Using aseptic technique, peel open package and transfer SWASHER to sterile field/personnel.

SWASHER Order Information

SWASHER Part Number	Description	Size (in)	Quantity	Packs Per Case
5010B	SWASHER, Blue	17 x 26	2/pack	100 units
5011B	SWASHER, Blue	17 x 26	4/pack	50 units

Remit To: Syntervention, Inc., 1444 Jeffreys Road, Suite 133
Rocky Mount, NC 27804

Contact Us: Phone: 888.505.8802
Fax: 888.853.6559
Email: info@syntervention.com

Tax ID: 45-3609564

Payment Terms: Net 30 days.

Shipment: Items are shipped ground unless otherwise specified.

Product Storage: Store in a cool, dry place. Avoid exposure to moisture and excessive heat.

Product Sterilization: The SWASHER is sterilized with EO.

Product Shelf Life: See package for Expiration Date.

Hazardous Material Status: Latex, BPA and DEHP free.

California Requirements: Meets Proposition 65 standards.

SWASHER Non- Sterile: The SWASHER is available in non-sterile version.

Returned Goods Policy: A Returned Goods Authorization (RGA) number is required for all returns and replacements. Authorization can be obtained by calling Syntervention Customer Service at 888.505.8802.



SYNTERVENTION

Syntervention, Inc.

1444 Jeffreys Road, Suite 133

Rocky Mount, NC 27804

Customer Service: 888.505.8802

Fax: 888.853.6559

www.syntervention.com

To view calculators visit www.syntervention.com/calculators.

To view the Learning Center Video Library visit
www.syntervention.com/video-library.

Syntervention and SWASHER, are trademarks or registered trademarks of Syntervention, Inc.

LB3018 Rev 02 04/24