



SWIPER[®]
Medical Device Foam Wiper

The SWIPER Medical Device Foam Wiper

The SWIPER is a sterile, biocompatible, lint-free foam wiper designed to remove blood and contrast from medical devices in diagnostic and interventional procedures.



SYNTERVENTION

SWIPER[®] Medical Device Foam Wiper

The lint-free and low particulate characteristics of the SWIPER minimize the transfer of foreign bodies into the patient. Data confirms that foreign body contamination is associated with complications and risks that increase the liability and costs to the hospital.*



Improved Efficiency

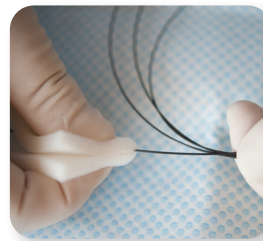
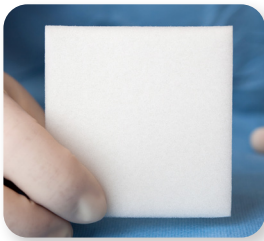
- Absorbs 20x its weight in saline solution.
- Transfers fluid evenly to medical device surface.
- Durable and non-shredding.
- Less abrasive than gauze.

Less Waste

- Two (2) SWIPERS are the typical amount of product used during a procedure.
- Use our calculators to estimate how much your facility could save.

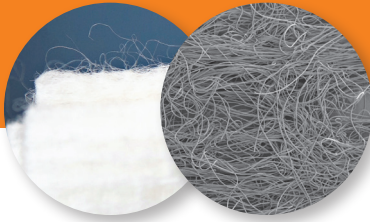
Effortless Handling

- Designed for easy, repetitive manipulation.
- Conformable yet maintains shape when wet.
- Fits comfortably into any hand size.

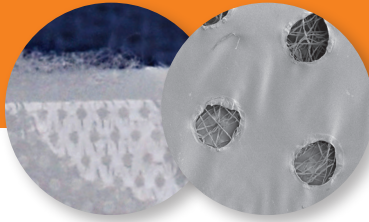


*See full literature review at www.syntervention.com/references.

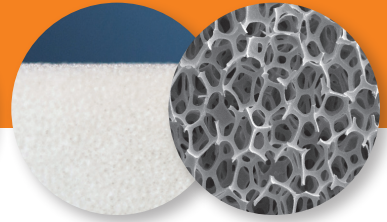
SWIPER Versus Cotton Gauze and Non-adherent Pad



Cotton Gauze
Magnification 30X



Non-adherent Pad
Magnification 30X



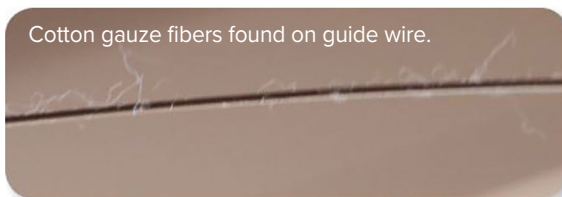
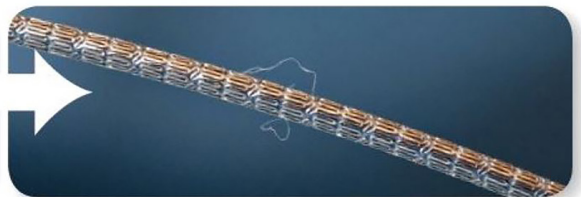
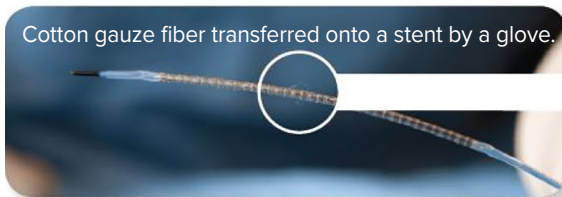
SWIPER
Magnification 30X

SWIPER has 93% less lint than Gauze and Non-adherent Pad.*

Product	$\geq 10 \mu\text{m}$	$\geq 25 \mu\text{m}$	$\geq 50 \mu\text{m}$	$\geq 100 \mu\text{m}$
Cotton Gauze	29,809	937	8	0
Non-adherent Pad	27,884	2,401	111	15
SWIPER	2,090	60	2	0

*Independent testing. Data on file at Syntervention, Inc.

Lose the Lint. Switch to SWIPER.



Instructions for Use:

1. Using aseptic technique, peel open package and transfer SWIPER to sterile field/personnel.
2. Hydrate SWIPER by compressing, submerging and releasing in sterile saline/water.
3. With light pressure, wipe medical device with hydrated SWIPER.

SWIPER Order Information

SWIPER Part Number	Dimensions (in)	Thickness (mm)	Quantity	Packs Per Case
5001	3 x 3	0.25	1/pack	100
5002	3 x 3	0.25	2/pack	100

Remit To: Syntervention, Inc., 1444 Jeffreys Road, Suite 133
Rocky Mount, NC 27804

Contact Us: Phone: 888.505.8802
Fax: 888.853.6559
Email: info@syntervention.com

Tax ID: 45-3609564

Payment Terms: Net 30 days.

Shipment: Items are shipped ground unless otherwise specified.

Product Storage: Store in a cool, dry place. Avoid exposure to moisture and excessive heat.

Product Sterilization: The SWIPER is sterilized with EO.

Product Shelf Life: See package for Expiration Date.

Hazardous Material Status: Latex, BPA and DEHP free.

California Requirements: Meets Proposition 65 standards.

SWIPER Non- Sterile: The SWIPER is available in non-sterile version.

Returned Goods Policy: A Returned Goods Authorization (RGA) number is required for all returns and replacements. Authorization can be obtained by calling Syntervention Customer Service at 888.505.8802.



SYNTERVENTION

Syntervention, Inc.

1444 Jeffreys Road, Suite 133

Rocky Mount, NC 27804

Customer Service: 888.505.8802

Fax: 888.853.6559

www.syntervention.com

To view calculators visit www.syntervention.com/calculators.

To view the Learning Center Video Library visit
www.syntervention.com/video-library.

Syntervention and SWIPER, are trademarks or registered trademarks of Syntervention, Inc.

LB3008 Rev 04 05/24