



# SWIPER<sup>®</sup>

MEDICAL DEVICE FOAM WIPER



## SWIPER<sup>®</sup> Medical Device Foam Wiper

The SWIPER is a sterile, biocompatible, fiber free, foam wiper designed for the removal of blood, contrast and other contaminants from sterile instruments and medical devices.

## SWIPER Medical Device Foam Wiper

The fiber free and low particulate characteristics of the SWIPER will minimize the transfer of foreign bodies into the patient. Data confirms that foreign body contamination is associated with complications and risks that increase the liability and costs to the hospital.\*



The SWIPER is highly absorbent and transfers fluid evenly to the medical device surface due to the variegated open-cell polyurethane pore structure. The conformable foam greatly improves efficiency in cleaning catheters and guidewires by contacting and wetting the full circumference of the device.

The material used in the SWIPER was originally developed and adopted by NASA and is now available for use in sterile medical procedures.

### Procedure Applications

- Cardiac Catheterization
- Peripheral Intervention
- Interventional Radiology
- Interventional Neuro-Radiology
- Vascular Surgery
- General Surgery
- Electrophysiology
- Ophthalmology
- Orthopedic Surgery
- Robotic Surgery
- Ear, Nose, Throat
- Dental

### Features

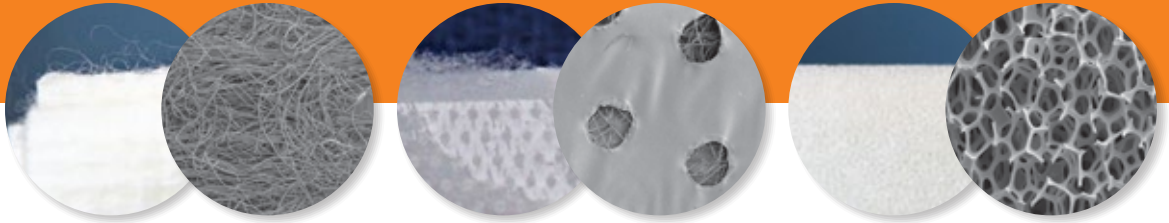
- Biocompatible
- Latex free
- DEHP free
- Fiber free
- Low particulate
- Pyrogen free
- Durable and non-shredding
- Conformable yet maintains shape during hydration
- Highly absorbent (holds 20 times its weight in saline)

### Device Applications

- Guidewires
- Catheters
- Gloves
- Surgical Instruments
- Implants
- Endoscope Lenses
- Laparoscopic Lenses

\*See full literature review at [www.synthervention.com/references](http://www.synthervention.com/references).

## SWIPER Versus Cotton Gauze and TELFA® Pad



Cotton Gauze  
Magnification 30X

TELFA Pad  
Magnification 30X

**SWIPER**  
Magnification 30X

### Testing by Independent Laboratory Proves SWIPER has Lower Particulate\*

Product	≥10 µm	≥25 µm	≥50 µm	≥100 µm
Cotton Gauze 4x4	29809 <sup>†</sup>	937 <sup>†</sup>	8	0
TELFA	27884 <sup>†</sup>	2401 <sup>†</sup>	111 <sup>†</sup>	15 <sup>†</sup>
<b>SWIPER</b>	<b>6692</b>	<b>70</b>	<b>2</b>	<b>0</b>

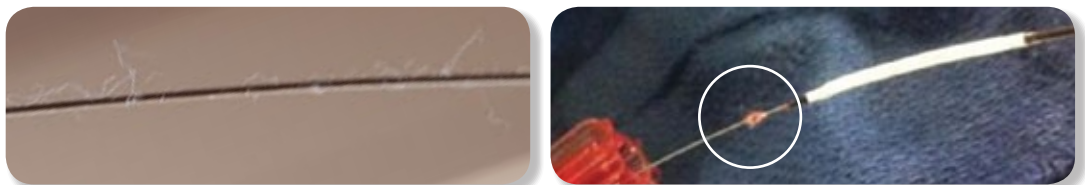
\*Test performed by submerging and squeezing product in 80 ml of filtered water and then analyzing sample of water with light obscuration particle counting equipment. Counts expressed as average number of particles within micron (µm) size range per 80 ml of fluid.

<sup>†</sup> Denotes particle count significantly greater than SWIPER (p < 0.05).

Data on file at Syntervention, Inc.



Cotton Gauze Fiber transferred onto a stent by a Glove.



Cotton Gauze Fibers found on Guide Wire.

Cotton Gauze Fibers being snowplowed down the Guide Wire.

## SWIPER Ordering Information



Part Number	Description	Size	Case Quantity
5001	SWIPER, 1 per pack	3"x 3"x 0.25"	100 units/case
5002	SWIPER, 2 per pack	3"x 3"x 0.25"	100 units/case
5004	SWIPER, 4 per pack	3"x 3"x 0.25"	100 units/case

**Remit To** Syntervention, Inc., 1444 Jeffreys Road, Suite 133, Rocky Mount, NC 27804

**Contact Us** Phone: 888.505.8802  
Fax: 888.853.6559  
Email: [customerservice@syntervention.com](mailto:customerservice@syntervention.com)  
[www.syntervention.com](http://www.syntervention.com)

**Tax ID** 45-3609564

**Shipment** Items are shipped ground unless otherwise specified.

**Product Storage** Store in a cool, dry place. Avoid exposure to moisture and excessive heat.

**Product Sterilization** The SWIPER is sterilized with gamma irradiation.

**Shelf Life** See package label for expiration date. 1-2 years.

**Latex/DEHP Status** SWIPER is latex and DEHP free.

**SWIPER Non-Sterile** SWIPER is also available in a non-sterile version.

**Returned Goods Policy** A Returned Goods Authorization (RGA) number is required for all returns and replacements. Authorization can be obtained by calling Syntervention Customer Service at 888.505.8802.

