



SWASHER™

ULTRA LOW-LINT SURGICAL TOWELS

SWASHER™ Ultra Low-Lint Surgical Towels

The SWASHER is a sterile biocompatible surgical towel designed to reduce lint and particulate contamination in Interventional and Surgical procedures.

SWASHER Ultra Low-Lint Surgical Towels

The ultra low lint and low particulate characteristics of SWASHER towels will minimize the transfer of foreign bodies into the patient. Data confirms that foreign body contamination is associated with complications and risks that increase the liability and costs to the hospital.*



It's a Fact – Lint contamination is a problem.

"...a wound containing foreign material is highly susceptible to infection even if few microorganisms are present."
Guidelines for Prevention of Surgical Wound Infections from the Centers for Disease Control and Prevention

"There is often a failure to recognize that particulate contamination can cause significant post-procedural complications ..."

"Lint and Particle Contamination During Diagnostic and Interventional Procedures in the Cardiac Catheterization Lab" Cath Lab Digest - Sept 2006

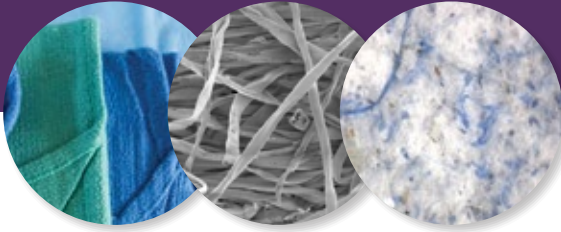
Procedure Applications

- Cardiac Catheterization
- Peripheral Intervention
- Interventional Radiology
- Interventional Neuro-Radiology
- Vascular Surgery
- Neurosurgery
- Cardiothoracic Surgery
- General Surgery
- Electrophysiology
- Ophthalmology
- Orthopedic Surgery
- Robotic Surgery
- Ear, Nose, Throat
- Dental

Features

- Biocompatible
- Latex free
- DEHP free
- 99% less lint than standard woven towels used in most ORs
- Excellent fluid capacity for uncompromised performance
- Grab tab™ fold allows easy opening
- Soft and drapeable, yet strong
- Lightweight to reduce medical waste
- Economical to keep overall costs low
- Made in USA

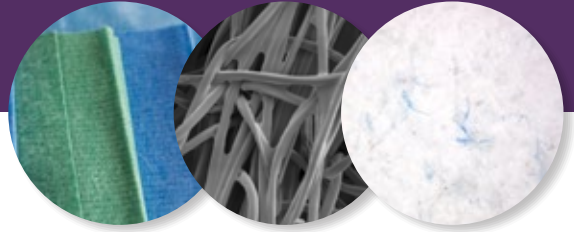
SWASHER Versus Cotton Towel



Cotton Towel

SEM 250x

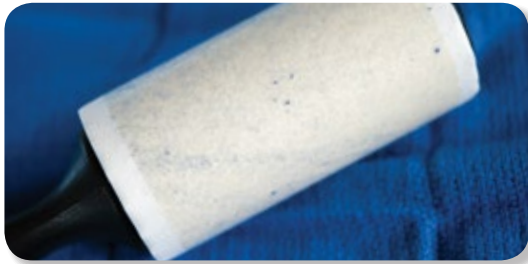
Wet Filtrate
Method 50x



SWASHER

SEM 250x

Wet Filtrate
Method 50x



Simple Lint Roller test performed on Cotton Towel.

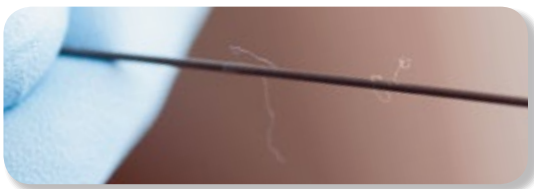


Simple Lint Roller test performed on **SWASHER**.

Testing by Independent Laboratory Proves SWASHER has Lower Particulate*

Product	Weight Ounces/Towel	Linting 0.5 – 25 microns	Absorbant Capacity Ounces of fluid/Towel	Absorbant Rate Seconds
Cotton Towel	1.75	326,925	6.3	3
SWASHER	0.81	<1,000	6.5	3

*Data on file at Syntervention, Inc.



Cotton Towel Fibers found on guide wire.



Cotton Towel Fiber found trapped on Stent strut.

SWASHER Ordering Information

Part Number	Description	Size	Case Quantity
5010B	SWASHER, Blue, 2 per pack	17"x 26"	100 units/case
5011B	SWASHER, Blue, 4 per pack	17"x 26"	50 units/case
5010G	SWASHER, Green, 2 per pack	17"x 26"	100 units/case
5011G	SWASHER, Green, 4 per pack	17"x 26"	50 units/case



Remit To Syntervention, Inc., 1444 Jeffreys Road, Suite 133, Rocky Mount, NC 27804

Contact Us Phone: 888.505.8802
Fax: 888.853.6559
Email: customerservice@syntervention.com
www.syntervention.com

Tax ID 45-3609564

Shipment Items are shipped ground unless otherwise specified.

Product Storage Store in a cool, dry place. Avoid exposure to moisture and excessive heat.

Product Sterilization The SWASHER is sterilized with ETO.

Shelf Life See package label for expiration date. 1-2 years.

Latex/DEHP Status SWASHER is latex and DEHP free.

SWASHER Non-Sterile SWASHER is also available in a non-sterile version.

Returned Goods Policy A Returned Goods Authorization (RGA) number is required for all returns and replacements. Authorization can be obtained by calling Syntervention Customer Service at 888.505.8802.

